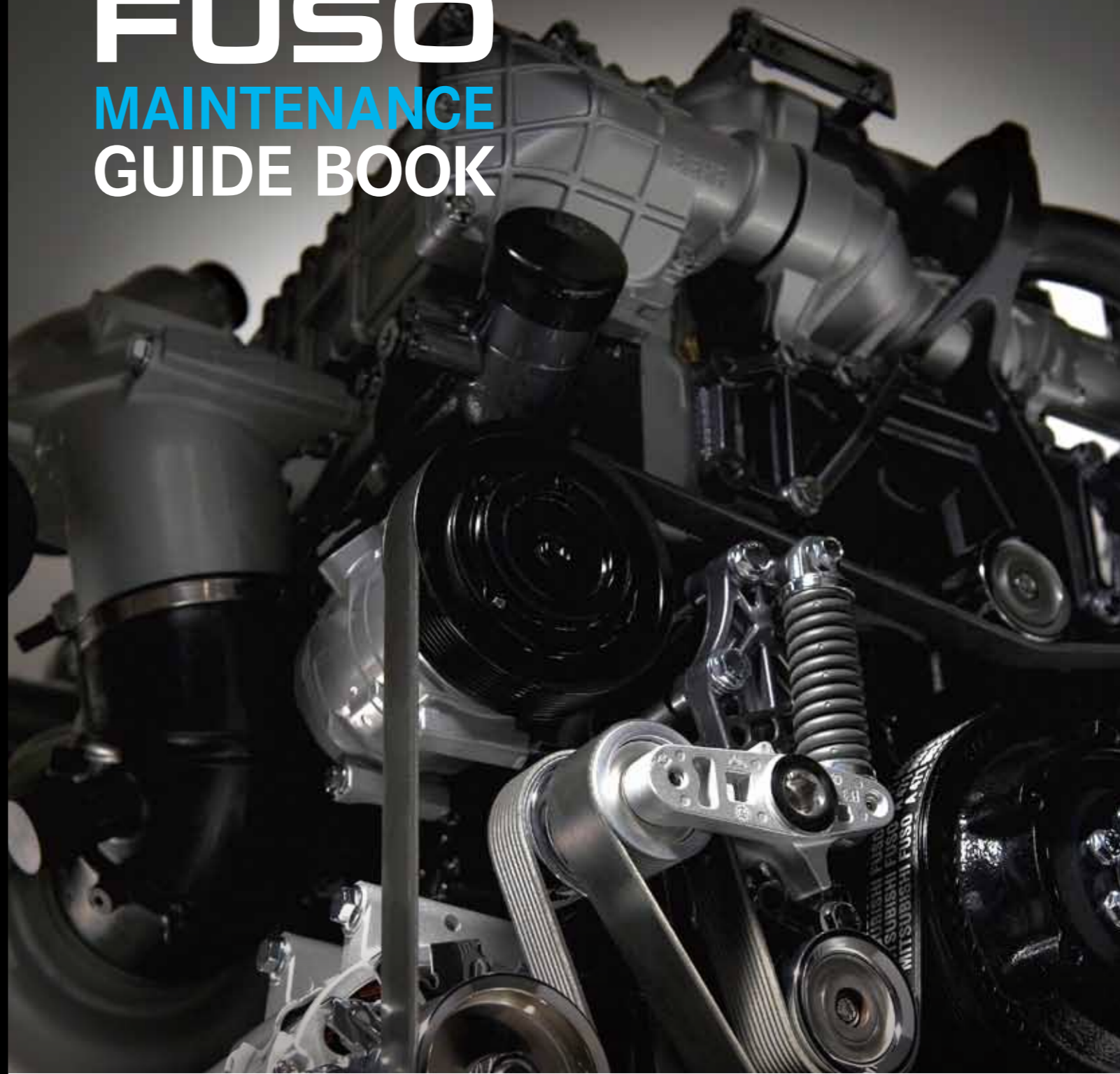


FUSO

MAINTENANCE GUIDE BOOK



Drive More Safely

Major Items for Regular Inspection and Replacement Heavy Duty Trucks

* The picture shows FP (heavy duty). Types and locations of periodic replacement parts may vary depending on the model.

To drive safely and lower costs for your Mitsubishi Fuso truck

Trucks are driven more frequently and for longer distances than cars.

That is why trucks require regular inspection and worn part replacement.

Lack of regular maintenance leads to costly problems.

This FUSO MAINTENANCE GUIDE BOOK is the guide for periodic maintenance from technical point of view.

To extend the life of your truck, minimize problem, and increase driving safety,

follow the instructions in the SERVICE BOOKLET by using FUSO MAINTENANCE GUIDE BOOK as a reference.


Engine oil		P.04
Oil filter		P.05
Air filter		P.05
Fuel filter		P.06



Air dryer		P.08
------------------	---	------

Wedge brake chamber		P.07
----------------------------	---	------

Brake lining		P.06
---------------------	---	------

Expander		P.07
-----------------	---	------

Be sure to use only Mitsubishi Fuso parts


Regular maintenance prevents unexpected problems and accidents. To ensure maximum safety, avoid imitations.

Use of only FUSO GENUINE PARTS or FUSO VALUE PARTS is the secret to longer truck life and lower cost of operation.

How to read this guidebook	P.04
Major periodic replacement parts	P.09
Inspection and maintenance	P.10


How to read this guidebook


Replace expander

1  Where part can be found

2 **Applicable Models** **Heavy duty** **Medium duty** **Light duty** Blue indicates the target model

3 **Role of the part** The expander is a part for operating the brake shoe inside of the brake drum to stop the truck. **Reason of replacement** The expander contains grease, rubber parts and springs inside. Because those deteriorate over time, it is necessary to overhaul or replace the expander with a rebuilt one.

4  Photograph of part (image)

5 **Likely problems if part is not replaced** If the use is continued, it will result in a lack of braking force and may result in a traffic accident.  Loss of grease and damage to spring / Grease turned into powder

- 1 Where part can be found
- 2 Blue indicates the target model
- 3 What part does and need for replacement
- 4 Photograph of part (image)
- 5 Likely problems if part is not replaced

Please use this guidebook during regular maintenance.

Replace engine oil



Applicable Models **Heavy duty** **Medium duty** **Light duty**

Role of the part

Engine oil has various effects of lubricating and cooling the engine and removing impurities such as sludge, carbon and metallic particles.

Reason of replacement

Engine oil becomes dirty and deteriorates over time. The replacement cycle can change depending on the model, mileage, duration of use as well as load (payload) and idle time, etc. To maintain the engine performance, it is recommended to replace it at regular intervals.

If the use is continued



It may result in **overheat or engine seizure.**
In the worst case,
it may result in a **truck fire.**

Replace oil filter



Applicable Models **Heavy duty** **Medium duty** **Light duty**

Role of the part

It filters out the impurities generated in the engine and keeps the engine oil clean.



Reason of replacement

Oil filter becomes dirty and the performance deteriorates over time. The replacement cycle can change depending on the model, mileage, duration of use as well as load (payload) and idle time, etc. To maintain the engine performance, it is recommended to replace it sooner rather than later.

If the use is continued



It may result in a **truck fire**

Replace air filter



Applicable Models **Heavy duty** **Medium duty** **Light duty**

Role of the part

It removes dust and sand contained in the atmosphere to provide clean intake air to the engine.



Reason of replacement

If the filter is clogged, the engine won't be able to exert its power or torque and it may result in various types of problems. It is necessary to be replaced periodically.

If the use is continued



The power and fuel efficiency decrease and the emissions become dirty.
It may result in an **engine stall.**

* The replacement timing may be different depending on the vehicle type, model or the operating conditions. Please contact a MITSUBISHI FUSO dealer for details.

Replace fuel filter



Applicable Models

Heavy duty

Medium duty

Light duty

Role of the part

The fuel filter removes debris and water, including the dust, rain water, and condensation water entered into the fuel tank during refueling, from the fuel.

Reason of replacement

The engine won't be able to exert its power or torque and the contaminants may inhibit engine function if not replaced.

If the use is continued



It may result in lack of engine power, no start, or an engine stall.



Replace expander



Applicable Models

Heavy duty

Medium duty

Light duty

Role of the part

The expander is a part for operating the brake shoe inside of the brake drum to stop the truck.

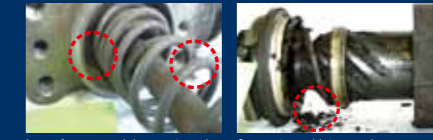
Reason of replacement

The expander contains grease, rubber parts and springs inside. Because those deteriorate over time, it is necessary to be replaced periodically.

If the use is continued



It will result in a lack of braking force and may result in a traffic accident.



Replace brake lining



Applicable Models

Heavy duty

Medium duty

Light duty

Role of the part

Brake lining protects the other parts of the brake but is subject to wear whenever brakes are applied.

Reason of replacement

Over time brake lining wears out and requires replacement.

If the use is continued



Without regular replacement brakes may not work properly, causing accidents or requiring costly repairs to the brakes themselves.



Replace wedge brake chamber



Applicable Models

Heavy duty

Medium duty

Light duty

Role of the part

The part is installed in trucks with full air brake. It brings the optimum braking force by just stepping on the brake lightly.

Reason of replacement

It has a diaphragm made of rubber assembled inside. This part may cause air leak due to aging. Because it may result in brake drag, it needs to be replaced periodically.

If the use is continued



Sudden braking or brake drag may occur. Ultimately, it will become non-drivable.



* The replacement timing may be different depending on the vehicle type, model or the operating conditions. Please contact a MITSUBISHI FUSO dealer for details.

Replace air dryer



Applicable Models

Heavy duty

Medium duty

Light duty

Role of the part

The air dryer removes water and oil from the air used to control brakes and other systems.

Reason of replacement

The desiccant used in the dryer deteriorates over time, and excess water in the pipes that deliver the air can cause corrosion.

If the use is continued



The desiccant used in the dryer deteriorates over time. The result may be brake or suspension malfunction, in the worst case traffic accidents.



* The replacement timing may be different depending on the vehicle type, model or the operating conditions. Please contact a MITSUBISHI FUSO dealer for details.

Major periodic replacement parts for trucks of Mitsubishi Fuso

The following are major periodic replacement parts that we recommend replacing in order to always safely and comfortably use the trucks of Mitsubishi Fuso. Please note that the parts that are shown below are not the only ones that we recommend replacing on a regular basis. Please check the Owner's Manual/Service Booklet inside your vehicle for more specific information, and make effort to replace the parts of your vehicle whenever it is appropriate.

Lubricants, fluids, elements

Power steering oil and oil filter

Brake fluid

Grease on wheel hub bearing
(replacement at time of vehicle inspection)

Clutch fluid

Manual transmission and transfer oil

Differential oil

Engine oil and oil filter

Engine cooling water

Air cleaner

Fuel filter

* The items printed in blue are parts needing periodic replacement.

Rubber parts, etc.

Power steering hose

Rubber parts inside power steering

Brake hose

Brake fluid tank tube

Drum brake wheel cylinder cap and other rubber parts

Air charge and air pressure gauge hose

Fuel hose

Air dryer desiccating agent filter, rubber, and packing

Disk caliper cap and other rubber parts

Master cylinder rubber parts

Servo unit vacuum hose

Servo unit rubber and packing

Valves for brakes

Brake expander rubber parts

Brake chamber rubber parts

Brake chamber piggyback

